

Full Round Distributor

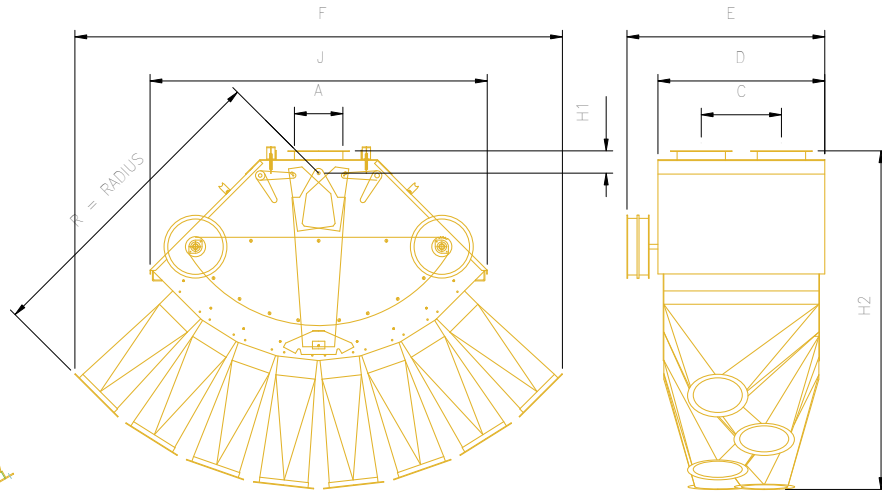
Flat Back Distributor

FLAT BACK / FULL ROUND DISTRIBUTOR

Outlet Size	Height (H) (Inches)
6"	30 1/2
8"	41
10"	46 1/2
12"	52
14"	57 1/2

NOTE: height is the same for 6, 8, 10, or 12 outlet models

Note: Heights are calculated from the top inlet to the bottom of the center outlet.



Dual Inlet Pendulum Distributor

Flowing Velocity

DIAMETER	BPH	TONS/HOUR
6"	2122	59.4
8"	3773	105.6
10"	5887	164.8
12"	8482	237.5
14"	11550	323.4
16"	15082	422.3
18"	19087	534.4
20"	23565	659.8
22"	28507	798.2
24"	33930	950
26"	39817	1149

* Specs are based on free flowing grain

6, 8, 10 OUTLET – 45° DUAL PENDULUM DISTRIBUTOR										
Outlet Size	A	B	C	D	E	F	J	H	R	
DIA WAY										
8	6					76 1/4"	52"		48 11/16"	
	8	8"	8"	13 3/4"	29 9/16"	90 5/16"	65 15/16"	3 7/8"	58 5/8"	
	10					104 1/16"	79 5/8"		68 5/16"	
10	6					88 1/8"	56 1/8"		55 7/8"	
	8	10"	10"	17"	36 1/8"	103 9/16"	71 1/2"	4"	66 3/4"	
	10					118 7/16"	86 3/8"		77 1/2"	
12	6					94"	64 3/4"		58 15/16"	
	8	12"	12"	19"	39 3/4"	112 7/16"	83 1/8"	4 1/16"	72"	
	10					131 11/16"	102 5/16"		85 5/8"	
14	6					112 7/8"	73 1/2"		77 1/2"	
	8	14"	14"	22"	43"			4 7/8"		
	10									

Note: Heights are calculated from the top inlet to the bottom of the center outlet.

Flowing velocity stated as grain flowing through a spout at a 45° angle for 10 feet or more, or approximately 875 to 1,000 FPM. This table could be utilized best for downspout size selection. Keep in mind as the grain flows down the spout the velocity increases and the grain stream occupies a smaller portion of the spout, thereby increasing the wear on the spouting.



DISTRIBUTORS

1247 FLORENCE RD., FLORENCE, ON N0P 1R0 P: 1.888.239.9713 F: 519.695.2529

sales@lambtonconveyor.com <http://www.lambtonconveyor.com>



Lambton is a trademark of Lambton Conveyor Limited.





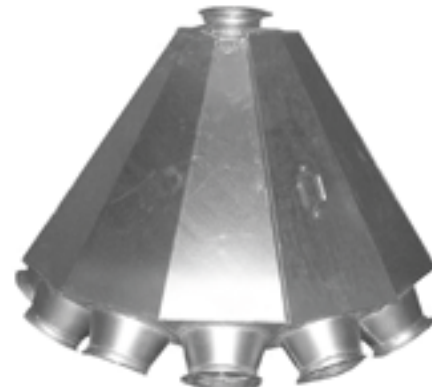
All Lambton Distributors are available in standard sizes - 6", 8", 10", 12" and 14"



Dual Inlet Pedulum Distributor



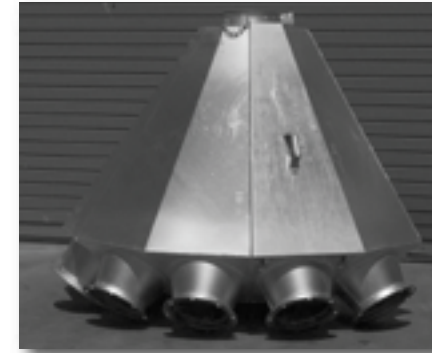
Full Round Distributor



Flat Back Distributor

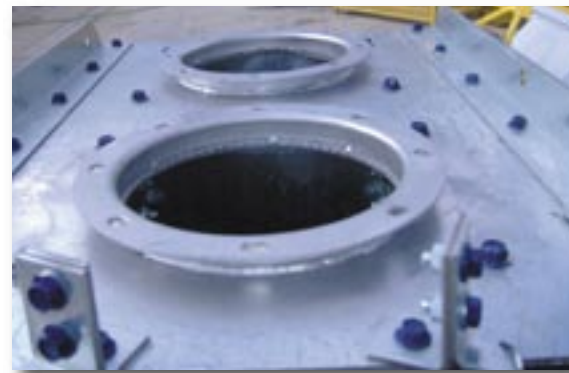
Flat Back and Full Round Style Features:

- Galvanized weather tight enclosure
- Large inspection door from top to bottom
- Heavy duty long lasting construction
- Positive position locking
- Schedule 40 pipe for inner spout
- Inner spout brush ensures product control
- Cable or electric actuated
- Easy turning (with UHMW guide)
- Round flange inlet & outlets
- Short throat for limited loss of discharge height



Dual Inlet Pendulum Style Features:

- Galvanized weather tight enclosure
- Large inspection door at each end
- Heavy duty long lasting construction
- Positive position locking
- Cable or electric actuated
- Easy turning (with sprocket & UHMW guide)
- Round flange inlet & outlets
- Short throat for limited loss of discharge height
- Standard abrasion resistant steel liners in pendulum spouts
- Standard urethane liners in all pendulum discharge transitions



Electric Distributor Controller:

The SG-383 combines state of the art touch screen technology and a durable DC drive control to offer outstanding performance. The entire process is being continuously monitored by the onboard CPU to ensure accurate positioning at all times.



Swing spout contains a dense bristle brush to reduce dust and buildup while obtaining the highest level of product control.

Positive pendulum positioning is achieved through Lambton's high grade roller chain. Precision roller chain also reduces loss due to stretching.



Electric Controller Features:

- One-touch control
- Bright display
- Easy set up
- Auto tuning
- Self-test feature
- High reliability
- 120V AC power

The positive position distributor mechanism is unlatched by using your weight to depress a foot pedal and turning the spout is as easy as turning a steering wheel

Electric Controller Options:

- Controls can be customized
- Cold climate package
- Catastrophic failure over-ride



Distributors come complete with controls for easy operation from ground level (control cable extra). Each set of controls is manufactured from galvanized steel. Each control wheel with handle comes with mounting brackets to fit any size leg trunk manufactured by Lambton Conveyor. These controls can therefore be mounted at any height desired.

