



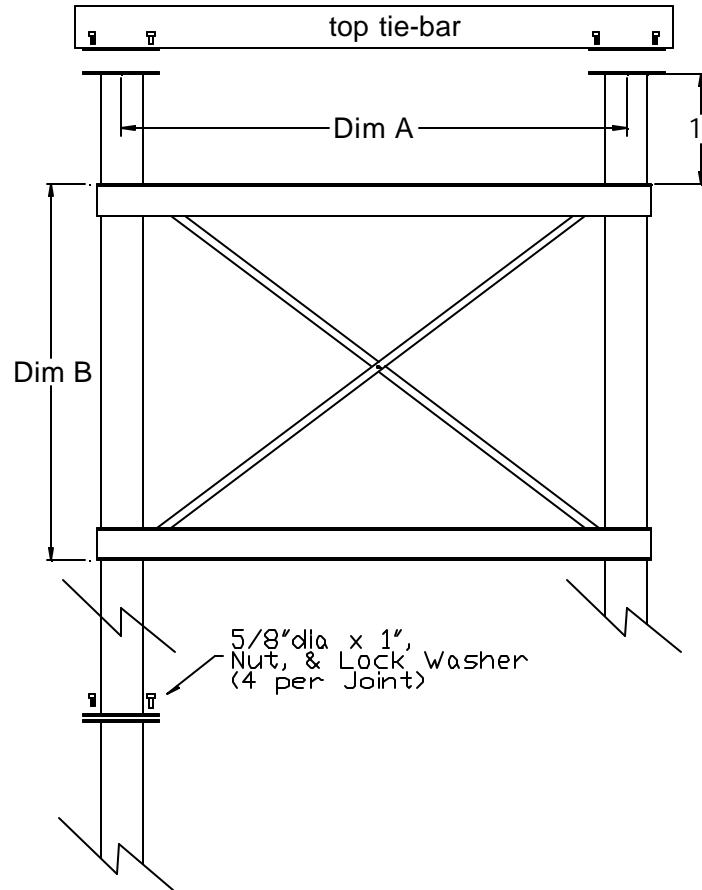
Tower Support  
Assembly Manual  
5', 7', & 9' Towers

(measured ctr-ctr on tower)

---

Dimensions
<b>A</b>
5'
7'
9'

Dimensions
<b>B</b>
6'-5"
8'
6'-9 5/16"



Lambton towers are assembled as follows:

- Step 1) All tower leg and top tie-bar sections are bolted together using  $\frac{5}{8}$ " X 1 bolts, nuts
- Step 2) Starting approx. 1' below top tie bar, install first set of main channels. They are held in place by using channel brackets on either side of tower leg (see diagrams below). The diagram shows using 4-  $\frac{5}{16}$ " bolts for one channel bracket.
- Step 3) Repeat step 2 to install the remainder of the main channels based on the dimensions in the diagram above.
- Step 4) Install the angle braces from channel to channel to form X bracing as shown in the diagram below.
- Step 5) Stand the tower upright and lag to the foundation using the supplied  $\frac{1}{2}$ "dia 5" long wedge anchor bolts.

**Note: USE SUPPLIED WASHERS ON ALL BOLTED CONNECTIONS.**

